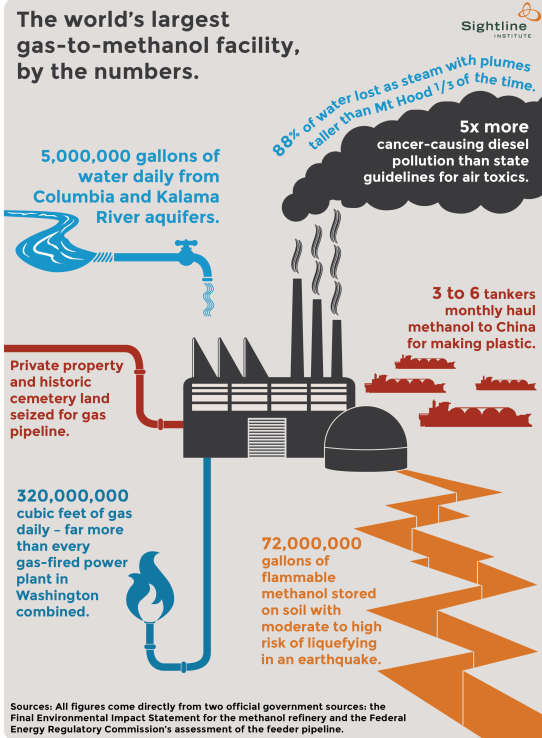


Kalama's Methanol Refinery

The world's largest gas-to-methanol facility, by the numbers.



Attn: Kalama Youth Treats -- Not Tricks!

ABOUT THE METHANOL REFINERY

The world's largest methanol refinery is proposed in Kalama. Do you know all the facts? If built it will obligate us to decades of fracked gas, each year using more than all other Washington industries combined, and INCREASE our state's greenhouse gas emissions. For a prosperous, safe, and healthy future, we must choose renewable energies. No more fossil fuels!

HELP STOP FRACKED-GAS-TO-METHANOL

Even if you can't vote yet, your opinion matters! Share your thoughts with Gov. Inslee urging him to #ActOnClimate and publicly oppose Kalama methanol refinery.

Twitter/Instagram: @GovInslee
or e-message him via www.governor.wa.gov.

LEARN MORE ONLINE

Issues surrounding the methanol refinery make good topics for a report or debate this school year.

Check out these resources:

ColumbiaRiverkeeper.org

CleanAirKalama.com

NoMethanol360.com

Twitter: @NoMethanol

**You are welcome at our meetings on the first Wed. of each month at 6 pm.
More teen involvement needed!**